

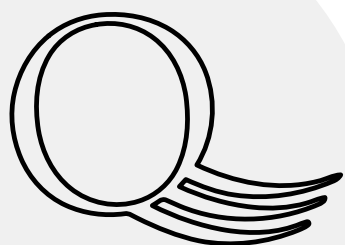
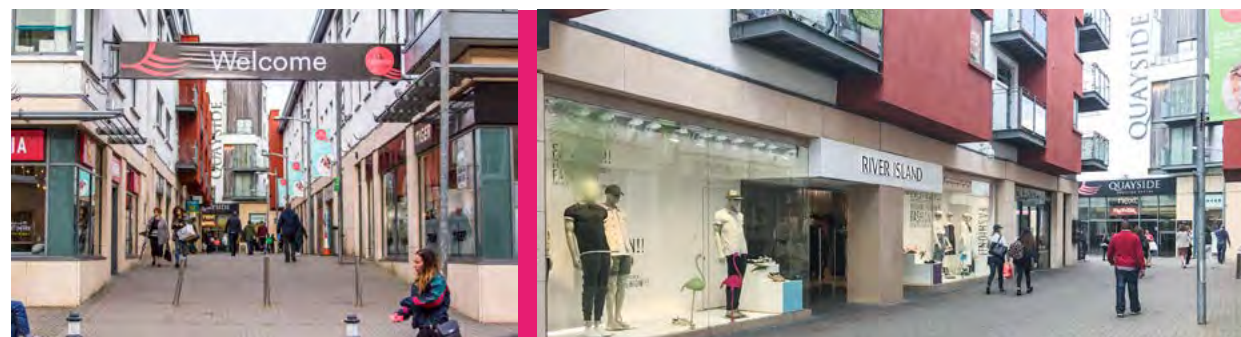


Q QUAYSIDE SHOPPING CENTRE

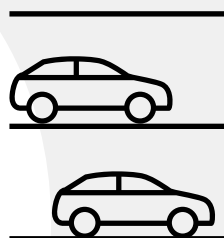
Great opportunity to be part of the North-West's leading retail destination



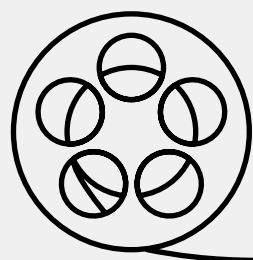
GREAT OPPORTUNITY TO BE PART OF THE NORTH-WEST'S LEADING RETAIL DESTINATION



Quayside Shopping Centre is the **largest shopping centre in the North West** providing over 120,000 sq.ft of retail space in the core of Sligo Town



The centre benefits from an integrated multi storey car park with over **400 car spaces**



12 screen cinema lies adjacent the entrance to Quayside Shopping Centre on Wine Street

Large number of international and national retailers such as -

next

T.K. MAXX

LIFE
STYLE
SPORTS

RIVER ISLAND

TIGER

Specsavers

MONSOON

OASIS

Dealz

with a mix of F&B including -

Domino's
Pizza

OSCARS

THE bagel BAR
Coffee House

INSOMNIA
coffee company

LOCATION



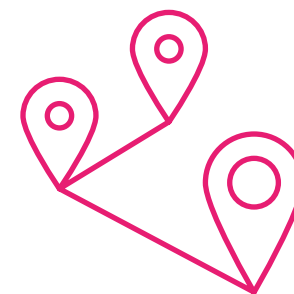
Sligo is the main county town with a county population of 65,357 (Census 2017)



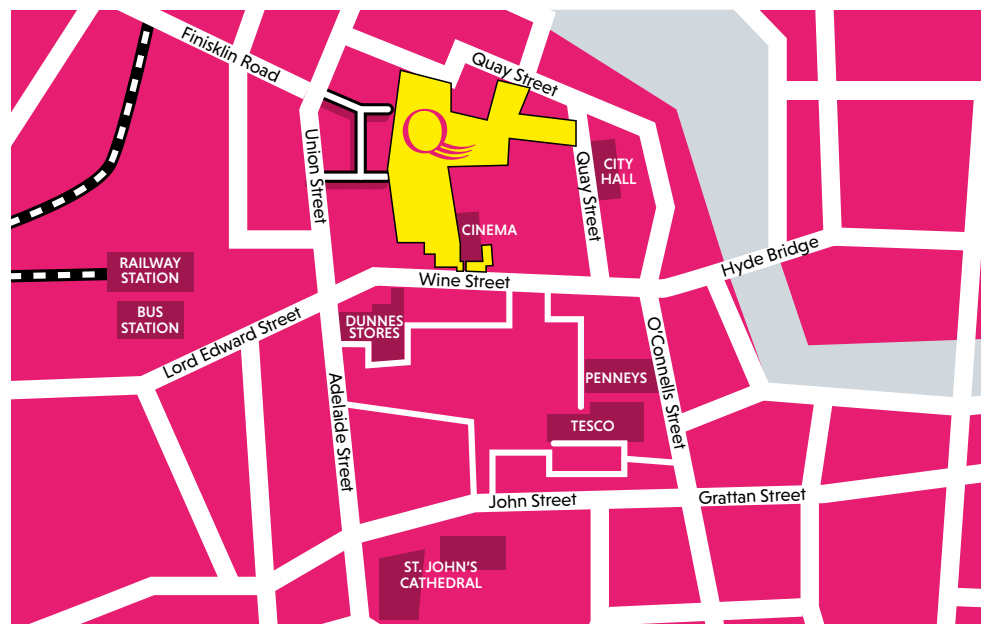
Largest centre of population in the North – West



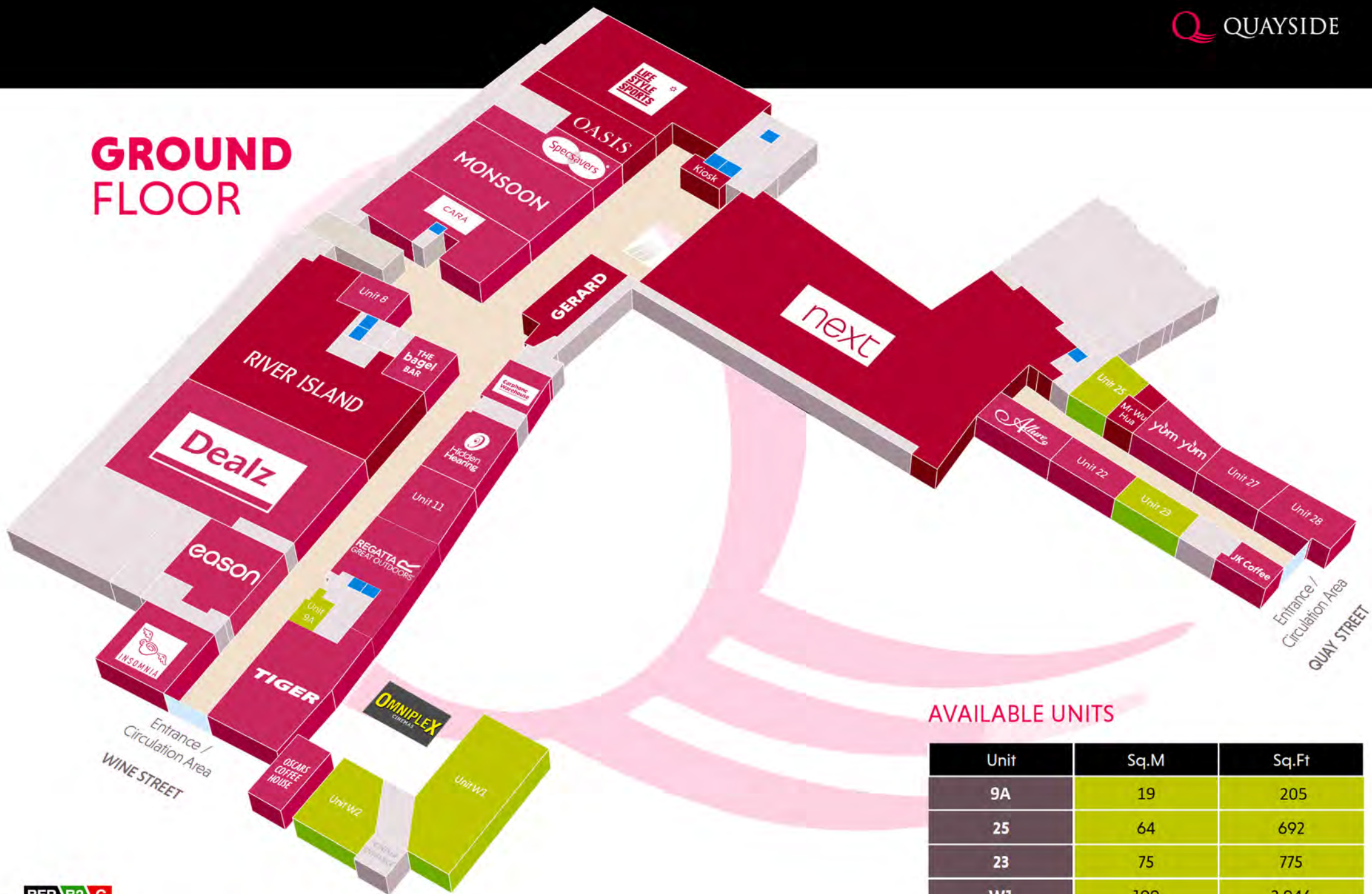
Catchment population of 105,800 with a catchment expenditure of €1.6bn



Serviced by a number of national primary routes including N17 (Galway) and N4 (Dublin)



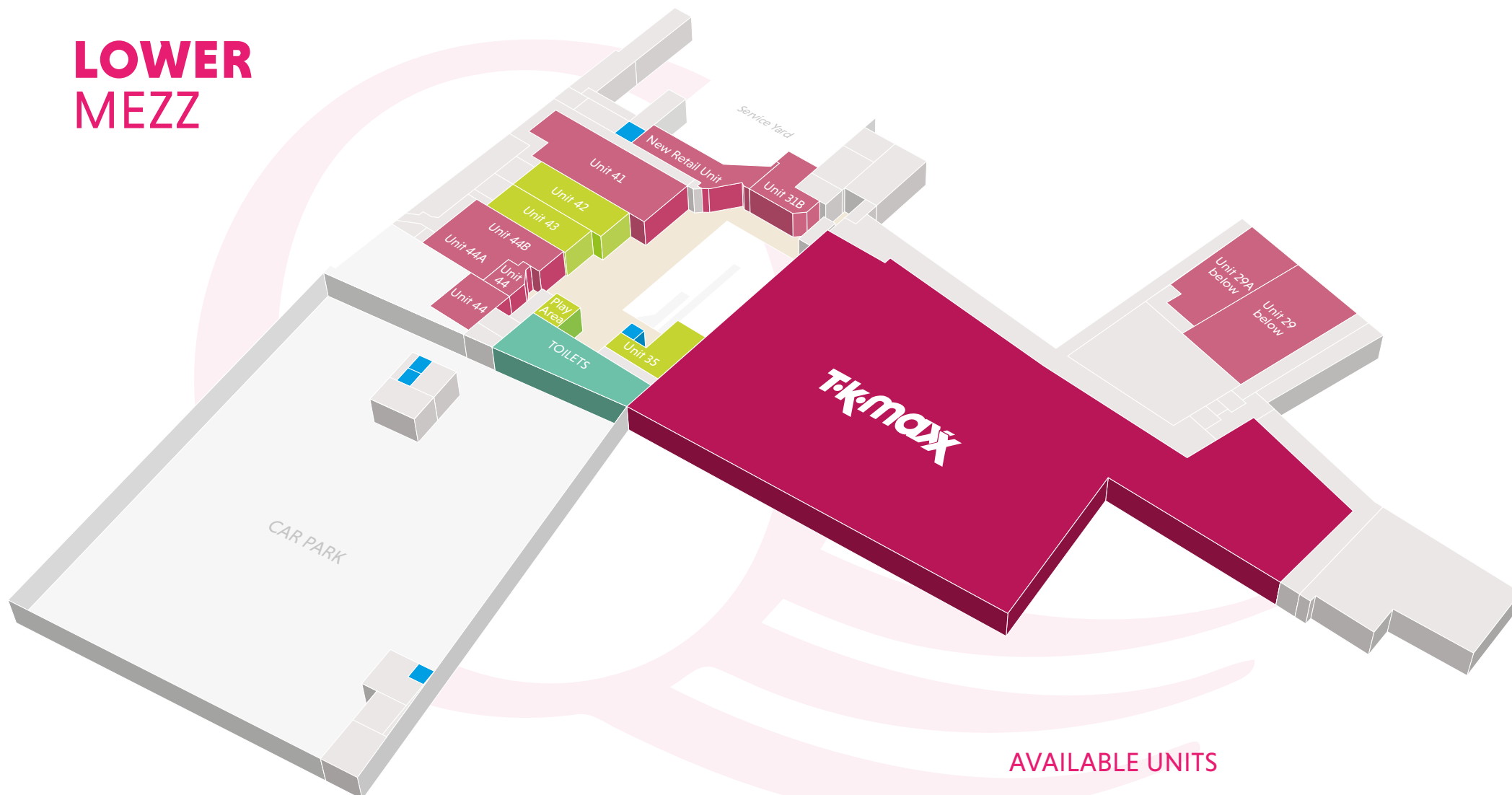
GROUND FLOOR



AVAILABLE UNITS

Unit	Sq.M	Sq.Ft
9A	19	205
25	64	692
23	75	775
W1	190	2,046
W2	71	761

LOWER MEZZ



AVAILABLE UNITS

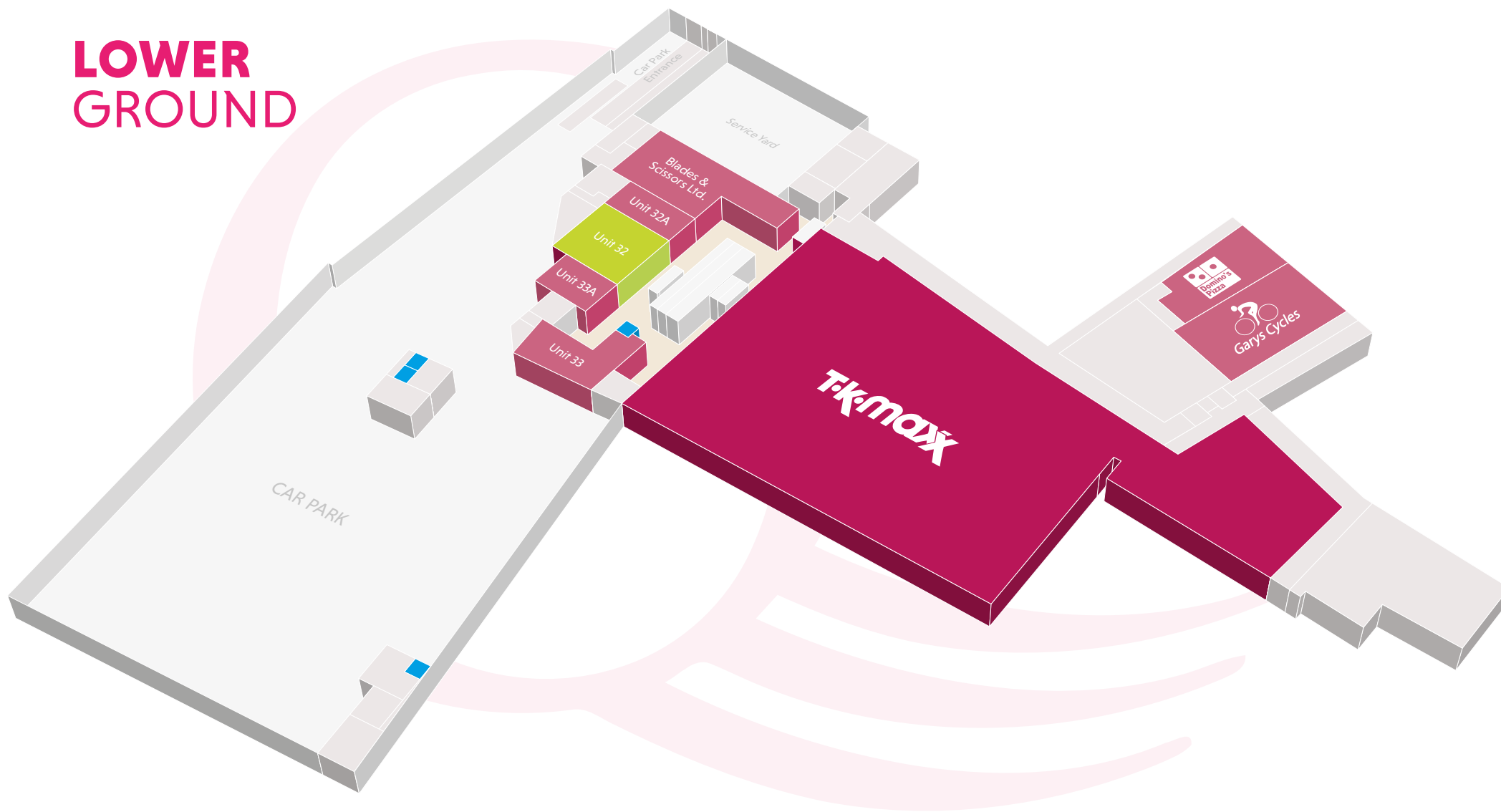
Unit	Sq.M	Sq.Ft
35	55	592
42	100	1076
43	89	958

BER B2 G

Available Under Offer Legal Negotiations

For illustration purposes only. Not to scale. Subject to variation.

LOWER GROUND



AVAILABLE UNIT

BER B2 G

Available Under Offer Legal Negotiations

Unit	Sq.M	Sq.Ft
32	126	1352

For illustration purposes only. Not to scale. Subject to variation.



QUAYSIDE

SHOPPING CENTRE

Great opportunity to be part of the
North-West's leading retail destination



Tel: +353 1 6477900
www.bannon.ie

DARREN PEAVOY
+353 1 6477900
dpeavoy@bannon.ie
PSR: 001830-002141

JENNIFER MULHOLLAND
+353 1 6477900
jmulholland@bannon.ie
PSR: 001830-002156

These particulars are issued by Bannon on the understanding that any negotiations relating to the property are conducted through them. While every care is taken in preparing them, Bannon, for themselves and for the vendor/lessor whose agents they are, give notice that – (a) The particulars are set out as a general outline for guiding potential purchasers/ tenants and do not constitute any part of an offer or contract. (b) Any representation including descriptions, dimensions, references to condition, permissions or licences for uses or occupation, access and any other details are given in good faith and are believed to be correct, but any intending purchaser or tenant should not rely on them as statements or representations of fact but must satisfy themselves (at their own expense) as to their correctness. (c) Neither Bannon nor any of its employees have any authority to make or give any representations or warranty in relation to the property. All maps are produced by permission of the Ordnance Survey Ireland Licence No. AU00470011 © Government of Ireland.