

Oblate View, Tyrconnell Road, Inchicore, Dublin 8

summary

details

streetview



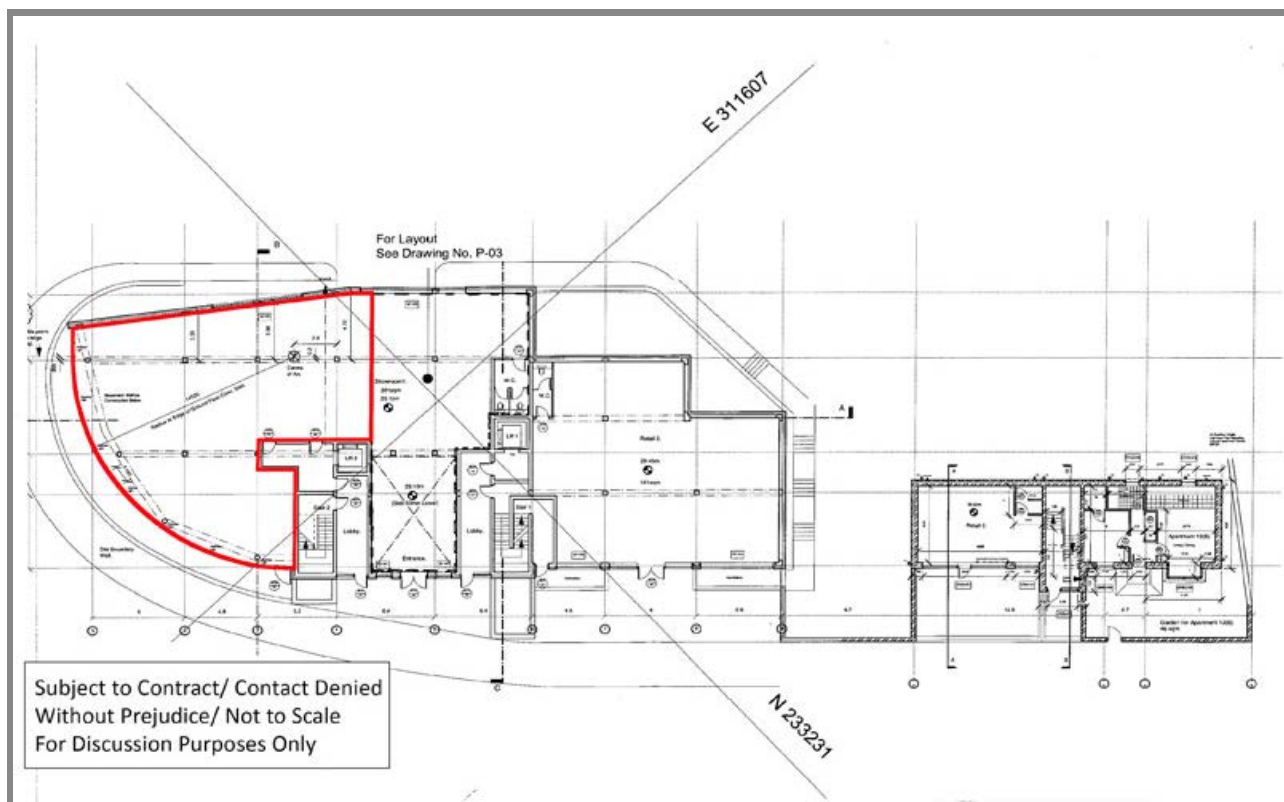
- High profile glazed corner retail unit
- 250 sq m (2,690 sq ft) ground floor accommodation
- On street parking
- Suitable for variety of uses
- Flexible lease terms available
- Quoting rent on application

Oblate View, Tyrconnell Road, Inchicore, Dublin 8

summary

details

streetview



250 sq.m (2,690 sq.ft) Net Internal Area (NIA) high profile glazed circular corner unit

Frontage onto Tyrconnell Road

Finished to a developers specification shell and core

Concrete floors and ceilings

Ready for tenant fit out

Flexible terms available

Rent

On application

Local Authority Rates

The property has not yet been rated

Location

Located on Tyrconnell Road, Inchicore, a well established south Dublin suburb

The surrounding area is a mix of housing, retail businesses and industrial facilities

Goldenbridge Industrial Estate located to the rear

4.5km from city centre with excellent transport links

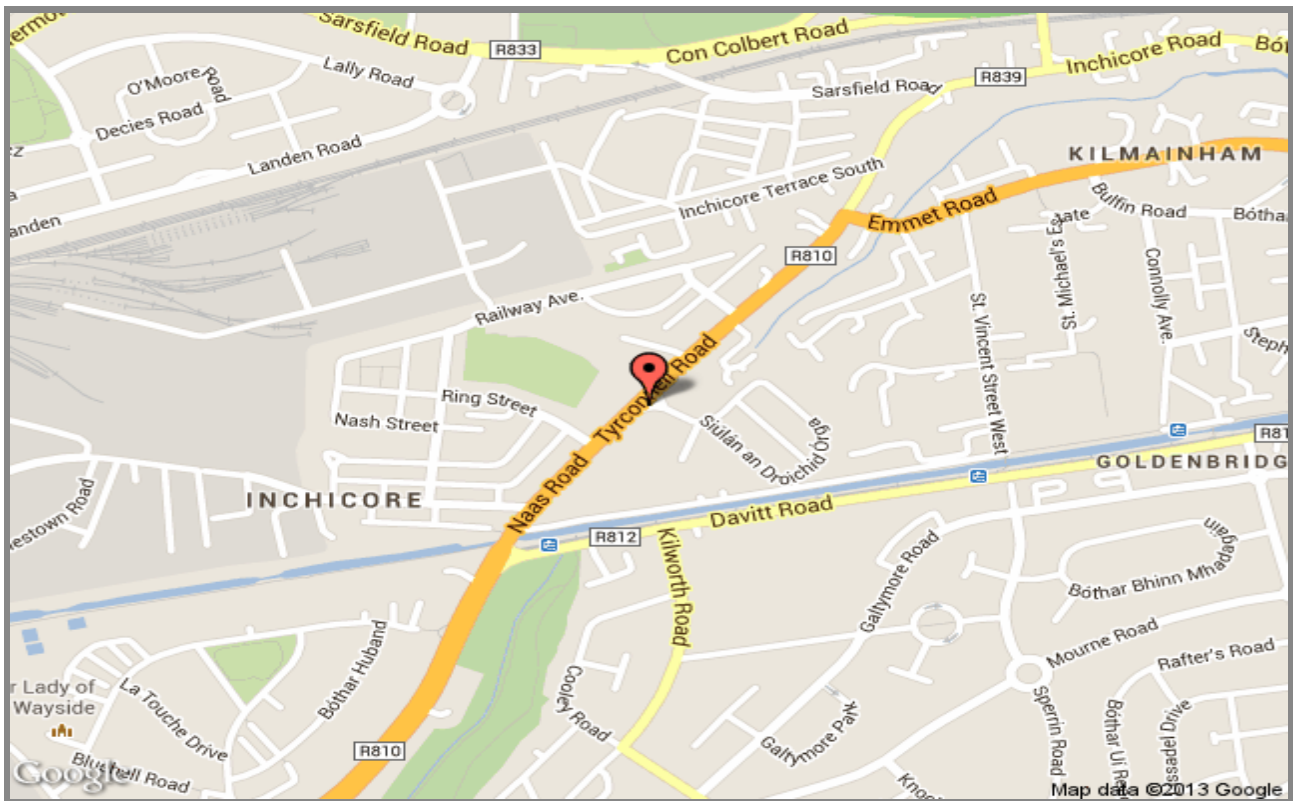
Luas: Blackhorse stop

Dublin Bus

Viewing

Strictly by appointment only

Oblate View, Tyrconnell Road, Inchicore, Dublin 8

[summary](#)[details](#)[streetview](#)

- High profile glazed corner retail unit
- 250 sq m (2,690 sq ft) ground floor accommodation
- On street parking
- Suitable for variety of uses
- Flexible lease terms available
- Quoting rent on application



Tel: +353 (1) 6477900

Cian McMorrow

cmcmorrow@bannon.ie